



Research Paper

Cluster analysis among the Maize inbred lines (*Zea maysl.*) under heat stress condition

Manoj Kandel,^{1*} Surya Kant Ghimire,¹ Bishnu Raj Ojha¹ and Jiban Shrestha²

¹Department of Genetics and Plant breeding, Agriculture and Forestry University (AFU), Rampur, Chitwan, Nepal

²Nepal Agricultural Research Council, National Maize Research Program (NMRP), Rampur, Chitwan, Nepal

*Corresponding author Email: manojkandel24@gmail.com

Received: 09/01/2018

Revised: 07/02/2018

Accepted: 09/03/2018

Abstract: High temperature limits plant growth and economic yield. Heat stress is often encountered to spring sowing of maize. Twenty maize inbred lines were studied for days to 50 % anthesis and silking, anthesis–silking interval, leaf firing, tassel blast, SPAD reading and leaf senescence, plant and ear height, leaf area index, ear per plant, cob length and diameter, number of kernel ear⁻¹, number of kernel row⁻¹, number of kernel row, silk receptivity, shelling percentage, thousand kernel weight and grain yield in alpha lattice design at National Maize Research Program at Rampur, Chitwan, Nepal with the objective to identify superior heat stress tolerant lines group. Result of cluster analysis revealed that twenty inbred lines formed four clusters. The resistance inbred lines and susceptible inbred lines separated in different clusters. The members of cluster 4 were found to be tolerant to heat stress due to they had lowest value of tassel blast, leaf firing, and leaf area index with highest value

of cob diameter and length, ear per plant, number of kernel row⁻¹, number of kernel ear⁻¹, number of kernel row, shelling percentage, silk receptivity and grain yield under heat stress condition. These inbred lines belonging to superior cluster 4 could be considered very useful in other breeding activities.

Keywords: Maize (*Zea mays L.*), Heat stress, Cluster analysis, Tolerant lines

INTRODUCTION

Maize (*Zea Mays L.*) is an important cereals crop belongs to the tribe Maydeae, of the grass family, Poaceae and popularly known as the ‘queen of cereals’ (Dhaka *et al.*, 2010). It is important cereal crop worldwide after wheat and rice in worldwide and second most staple food crop both in term of area and production after rice in Nepal. It is grown in 8, 91,583 ha producing 2.2 million tons, with an average yield of 2500 kg ha⁻¹ (MoAD, 2016). Beside direct consumption as food, it is also an important source of

industrials raw materials example the manufacture a starch, dextrose, oil sugar, syrup, enzymes, adhesive paper and plastic. Maize demand will be double in developing world in 2050 and it predicted as maize is of greatest production globally and in developing world by 2025 (Rosegrant *et al.*, 2008).

Climate change effects such as global warming is major challenge on crop production and identify possible ways that would allow yield ceilings to shift by developing improved thermos tolerant cultivars. Therefore, these efforts are particularly important in south Asia, where current production systems are not sustainable and could be adversely impacted by climate change in the near future (Niyogi *et al.*, 2010). Heat and drought stress have emerged as a common problem worldwide which can reduce maize crop productivity (Ali *et al.*, 2015). Maize production drop record was found in many maize-growing areas of the world (Van der Velde *et al.*, 2010). It was found that maize yield reduced up 70 % under heat stress condition due to reduces pollen viability, silk receptivity and longer anthesis silking interval (Khodarahmpour *et al.*, 2011).

Genetic diversity analysis is imperative in crop improvement and can be studied through morphological, biochemical and molecular markers. Morphological characterization for genetic divergence among genotypes is considered an initial step (Khan *et al.*, 2014). Therefore, morphological data has play key role in management of genetic resources. To management of genetic resource study relationships and description and classification of germplasm the morphological characterization is the first

step (Smith and Smith, 1989). Maize accession were frequently used to classify by cluster analysis and that can be utilized by plant breeders as well as geneticists to findout subsets of accessions that can have valuable for specific breeding or genetic aim (Rincon *et al.*, 1996).

In plant breeding, cluster analysis technique help to separate the varieties into homogeneous groups from heterogeneous group such that those varieties within a group have a similar to each other in response pattern across the locations. Many researchers have used principal component analysis to assess genetic variability among maize genotypes because it retrieves small numbers of components that account for most of the variations in the data (Asare, 2016). The objective of the research was to identify superior heat stress tolerant inbred lines after clustering them based on their response to heat stress condition.

MATERIALS AND METHOD

The research was conducted at National Maize Research Program (NMRP) in Rampur, Chitwan during spring season from February 24, 2015 to July 2016, geographically located at 27° 37' North Latitude and 84 ° 29' East longitude at an altitude of 225 meter above sea level. This site contains only sandy loam soil with acidic reaction. This research location is characteristics of subtropical climate. The plant materials were collected from National Maize Research Program (NMRP). The list of inbred lines along with pedigree information included in the study is presented in Table 1.

Table 1: Names and pedigree information of maize inbred lines used for heat stress research at NMRP Chitwan (2016).

S.N.	Inbred line of maize	Pedigree sources/origin	S.N.	Inbred line of maize	Pedigree sources/origin
1	NML-2	CML-430	11	RL-101	UPAHAR-B-20-2-3-1-1
2	RML-4	CA00326	12	RML-24	CA00304
3	RML-32	CA00320	13	RML-40	CML-427
4	RML-95	PUTU-17	14	RML-57	CLQG6602
5	RML-86	PUTU-20	15	RL-107	UPAHAR-B-20-2-4-3-1
6	RML-17	CML-287	16	RML-20	CA-34503
7	RML-96	AG-27	17	RML-76	CLRCYQ007
8	RL-105	UPAHAR-B-20-2-4-1-1	18	RML-7	CML-413
9	RL-111	UPAHAR-B-31-1-1-1-1	19	RML-91	PUTU-19
10	RML-115	PUTU-17	20	RL-140	POOL-21-12-1-2-2-1-1

Field experiment was conducted in alpha lattice design. There were two conditions: normal and plastic house (for heat stress), each condition replicated twice. Each replication comprised four blocks consisting of five plots each. Each plot was 3 meter in length 0.6 meter wide. Each plot had one row with spacing 20 cm between rows, inter block gap was 0.5 m was maintained. Each plot contained single row with spacing 60×20 cm and consisted 15 hills, each of two seed were sown, one of whose seedling were removed at the six leaves stage. The dose of chemical fertilizer applied was 120:60:40 kg NPK per hectare. Fertilizer were applied prior to sowing at rate of 60 N kg ha⁻¹, 60 kg P and 40 K ha⁻¹ and additional side dressing of 30 N kg ha⁻¹ were applied at the two times in six leaves stage and knee high stage of maize. The irrigation

was done three important stage, knee high stage, tasseling stage and milking stage. To created heat stress condition maize study half of field was controlled heating imposed using two plastic (120gsm) houses were used two week just prior to the onset of reproductive period up to the crop harvesting. Maximum mean temperature 46.2°C in April in heat stress condition whereas as normal condition was 37.23°C and similarly for May month in maximum mean temperature was 43.28°C whereas in normal condition 34.54°C means mean temperature 8-9°C higher in plastic house at time of flowering, pollination & grain filling periods responsible for creates heat stress condition as shown in Fig 1. Partial opening top side of tunnel was done for control relative humidity inside tunnel to avoid any possible disease outbreak.

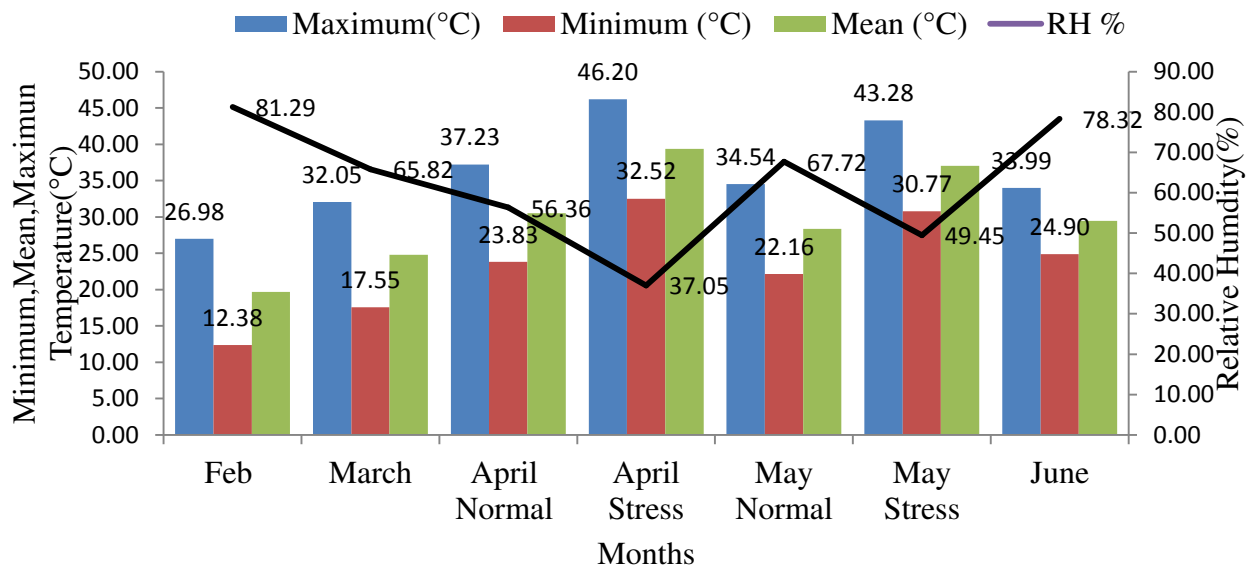


Figure 1: Weather data during the research period at NMRP, Chitwan (2016).

Data collection: Data on days to 50% anthesis, days to 50% silking and ears per plot, leaf firing, tassel blast, leaf senescence were recorded on plot basis. Whereas, ear height (cm), number of kernels cob⁻¹, number of kernel row, number of kernel row ear⁻¹, SPAD reading, leaf area index, silk receptivity, thousand kernel weight (g) and shelling per cent were recorded on five selected representative plants. The sample cobs were shelled, cleaned and grain weight and shank weight were recorded to calculate the shelling percent. Thousand kernel weight was measured by counting 1000 grains from the bulk of each plot after shelling and weighed in grams after the moisture was adjusted to 15%. Anthesis-silking interval (ASI) was calculated by subtracting the number of days taken for 50% anthesis from the number of days taken to 50% silk emergence. Leaf area index was calculated by total leaf area divided by land area and multiply by correction factor (0.75). Silk

receptivity was recorded by total number of fertilized grains per ear divided by number of potential grain per ear. Leaf firing was obtained by the counting the number of plants that showed leaf firing symptoms (younger leaves near tassel burnt or dried) in the total number of plants in a particular plot and was expressed in percentage. Tassel blast was obtained by the counting the number of plants that showed tassel blast symptoms (tassel dried with partial or no pollen shedding) in the total number of plants in particular plot was expressed in percentage. Grain yield was calculated using formula adopted by adjusting the grain moisture at 15% and converted to the grain yield per hectare (Carangal et al., 1971).

Statistical Analysis: The data recorded on different parameters from in heat stress field were first tabulated and processing in Microsoft excel (MS-Excel, 2010), then subjected to restricted maximum likelihood (REML) tool in GenStat to obtain ANOVA.

These collected data were subjected to cluster analysis (average linkage method) and principal component analysis using statistical software packages of Minitab ver.17.

RESULTS

CLUSTER ANALYSIS: All the inbred lines were clustered using day to 50 % tasseling and silking, anthesis-silking interval (ASI), leaf firing, tassel blast, SPAD reading and leaf senescence, plant and ear height, leaf area index, ear per plant, cob length and diameter, number of kernel ear⁻¹, number of kernel row, number kernel ear⁻¹, silk receptivity, shelling percentage, thousand kernel weight at heat stress condition as variables. The dendrogram revealed four clusters with minimum of 22.47 % similarity level in UPGMA Clustering. The distance between the clusters centroid was found highest between clusters 1 and 4 and lowest between clusters 2 and 4 is presented in Table 2. The clusters were divided into two groups: group A and Group B. Group A consisted of one cluster named as cluster one whereas group B consisted of three clusters namely Cluster2, Cluster 3 and cluster 4.

Cluster 1 consisted of 8 lines named as NML-2, RL-105, RML-24, RL-111, RML-4, RML-86, RML-95 and RML-115 which represent 40% of total lines. Inbred lines grouped in this cluster had longer anthesis-silking interval, with maximum

tassel blast and leaf firing along with zero value for grain yield including cob length, cob diameter & length, number of kernel row ear⁻¹, number of kernel ear⁻¹, number of kernel row, shelling percentage, silk receptivity and thousand kernel weights. The lines of this cluster are most susceptible to heat stress.

Cluster 2 consisted of 5 lines named as RL-101, RML-17, RML-32, RML-96 and RML-7, 25% of total lines was characterized with highest leaf senescence followed by thousand kernel weight and lowest for cob diameter and length, ear per plant, number of kernel row ear⁻¹, number of kernel ear⁻¹ and number of kernel row.

The inbred lines categorized into cluster 3 were RL-107, RML-20 & RML-57, 15 % of total lines had shorter plant and ear height, late physiological maturity and highest for ear per plant.

Cluster 4 consisted of 4 lines named as RL-140, RML-76, RML-91 and RML-40, 20 % of total lines were characterized by lowest value of tassel blast, leaf firing, leaf area index with highest value of cob diameter and length, ear per plant, number of kernel row ear⁻¹, number of kernel ear⁻¹, number of kernel row, shelling percentage, silk receptivity and grain yield in heat stress condition. Since this cluster of lines had superior trait value for heat stressed condition, these lines may be of interest to researchers.

Table 2: Distance among the different cluster centroid of maize under heat stress at NMRP, Rampur, Chitwan (2016).

	Cluster1	Cluster2	Cluster3	Cluster4
Cluster 1	0	614.977	398.599	750.397
Cluster 2		0	247.245	158.825
Cluster 3			0	399.583
Cluster4				0

Table 3: Mean of Clustering of 20 Maize inbred lines under heat stress condition at NMRP, Rampur, Chitwan (2016).

Variable	Cluster 1	Cluster 2	Cluster 3	Cluster 4	Centroid
No. of inbred lines	8	5	3	4	20
Anthesis silking interval	5.06	2.8	2.66	3.37	3.8
Leaf area index	2.83	2.55	2.53	2.47	2.64
SPAD Chlorophyll	33.209	41.31	42.93	40.56	38.16
Leaf firing	26.35	14.88	11.6	5.75	17.13
Tassel blast	47.51	28.64	27.33	26.825	35.63
Plant height	131.25	130.78	125.133	129.45	129.85
Ear height	71.06	65.74	59.833	63.8	66.59
Physiological maturity	107.563	105	104.16	107.75	106.47
Leaf senescence	58.75	72	68.33	60	63.75
Ear per plant	1.18	1.066	1.323	1.143	1.16
Cob diameter	0	2.69	2.77	2.93	1.677
Cob length	0	11.46	8.43	11.64	6.37
Number of kernel row per ear	0	11.04	10.76	11.35	6.64
Number of kernel row	0	12.26	13.26	13.825	7.82
Number of kernel per ear	0	56.46	49.73	102.37	42
Silk receptivity	0	27.1	21.76	35.95	17.23
Shelling percentage	0	51.17	25.44	50.89	26.78
Thousand kernel weight (g)	0	285.32	260.467	271.825	164.76
Grain yield (kg ha ⁻¹)	0	537.68	293.4	688.05	316.04

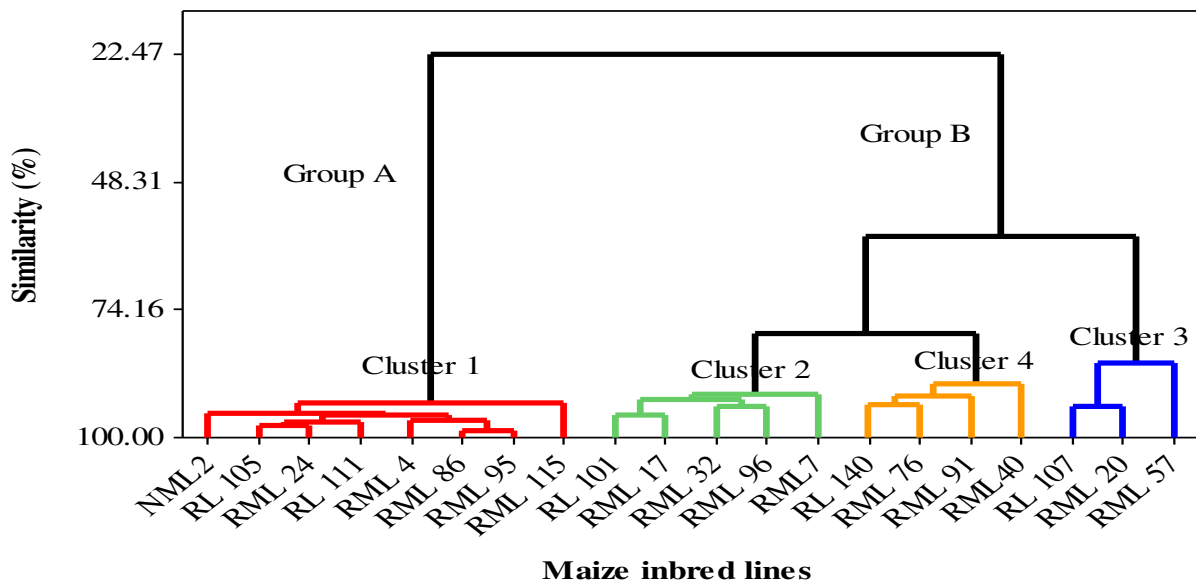


Figure 2: Cluster analysis of 20 maize inbred lines evaluated for agro-morphological traits under heat stress at NMRP, Rampur, Chitwan (2016).

DISCUSSION

In present study there is sustainable genetic diversity in grain yield and heat tolerance trait. Khodarahmpour *et al.*, (2011) reported similar finding reduced grain yield up to 70% under heat stress condition in maize inbred lines. Grain yield reduction was associated with poor pollen viability under heat stress condition reported by Rowhani *et al.*, (2011). Pre-anthesis stress in plants absorption of fertilized structure and reduced ear growth rate lead to reduction in kernel number leading to barrenness and ultimate affect crop yield reported by Cicchino *et al.*, (2010b). There were four considerable genetic divergence groups due to genetic factor also subjected to environmental factor. Shrestha, (2016) also reported that significant amount of genetic diversity for in maize inbred line for their different morphological traits. Marker and Krupakar (2009) also have studied genetic variability for 14 traits in 16 genotypes if of maize. The presence of divergent cluster indicated their superior trait value for heat stressed condition; these inbred lines may be of interest to researcher for abiotic stress breeding. Souza and Sorrels (1991) also reported estimation of genetic diversity and relationships among germplasms accessions facilitates the selection of parents with diverse genetic background which is very essential for breeding program. Thus similar finding about presence of genetic diversity in maize yield and its component were also reported by Singh and Chaudharai (2001). In present study cluster 4 were most heat stress tolerance this finding similar by Ali *et al.*, (2008) also found that cluster analysis utilized for finding high yielding genotypes.

Conclusions: UPGMA cluster revealed that inbred lines formed four distinct clusters. The resistant lines and susceptible lines formed different clusters. The member of cluster 4 was found to be tolerance to heat

stress. The presence of high level of diversity among the inbred line for heat stress tolerance grouped into divergent cluster indicated their superior trait value for heat stressed condition; these inbred lines may be of interest to researcher for abiotic stress breeding.

Acknowledgement: The author would be highly indebted to MahendraTripathi and RajendraDarai scientist at Nepal Agriculture Research Council (NARC) for providing valuable suggestions and ideas during research. He would also like to thank to National Maize Research Program Rampur (NMRP) for the provision of research materials. The authors also acknowledge to National Agriculture Research and Development Fund (NARDF) for the financial support in conducting the research work.

REFERENCES

- Dhaka B. L., Meena B.S. and Suwalka R.L. (2010) Popularization of improved maize production technology through frontline demonstrations in south-eastern Rajasthan. *J. Agricultural Sci.*1(1), 39-42.
- MoAD. (2015/16) Statistical Information on Nepalese Agriculture. Agri business promotion and statistical division, Agristatistic section, Singhdurbar, Kathmandu.
- Rosegrant M. W., and Agcaoili M. (2010) Global food demand, supply, and prices prospects. International food policy research Institute, Washington, DC, USA.
- Niyogi D., Kishtawal C., Tripathi S. and Govindaraju R.S. (2010) Observational evidence that agricultural intensification and land use change may be reducing the Indian summer monsoon rainfall. *Water Resources Research*, 46(3).

Ali F., Kanwal N., Ahsan M., Ali Q. and Niazi N.K. (2015) Crop improvement through conventional and non-conventional breeding approaches for grain yield and quality traits in *Zea mays*. Life Sci. J.12(4s).

Van der Velde, M., Wriedt G. and Bouraoui F. (2010) Estimating irrigation use and effects on maize yield during the 2003 heatwave in France. Agriculture, ecosystems and environment. 135 (1), 90-97.

Khodarahmpour Z., and Choukan R. (2011) Genetic Variation of Maize (*Zea mays* L.) Inbred Lines in Heat Stress Condition. Seed and Plant Improvement Journal.27(4), 539-554.

Khan H., Marwat K.B., Khan M. A. and Hashim S. (2014) Herbicidal control of parthenium weed in maize. Pak. J. Bot. 46(2), 497-504.

Smith J. S. C., and Smith O.S. (1989) The description and assessment of distance between inbred lines of maize. 2: The utility of morphological-biochemical-and genetic descriptors and a scheme for the testing of distinctiveness between inbred lines [in USA]. Maydica (Italy).

Rincon F., Johnson B., Crossa J. and Taba S. (1996) Cluster analysis: An approach to sampling variability in maize [*Zea mays* L.] accessions. Maydica (Italy).

Asare S., Tetteh A.Y., Twumasi P., Adade K.B. and Akromah R.A. (2016) Genetic diversity in lowland, midaltitude and highland African maize landraces by morphological trait evaluation. African J. Plant Science. 10, 246-257.

Carangal V.R., Ali S.M., Koble A.F. and E.H. Rinke E.H. (1971) Comparison of S1

with testcross evaluation for recurrent selection in maize. Crop Sci.11, 658-661.

Rowhani P., Lobell D.B., Linderman M. and Ramankutty N. (2011) Climate variability and crop production in Tanzania. Agricultural and Forest Meteorology. 151(4), 449-460.

Cicchino M., Edreira J.I, Uribe Larrea M. and Otegui M.E. (2010b) Heat stress in field-grown maize: Response of physiological determinants of grain yield. Crop Science, 50(4), 1438-1448.

Shrestha J., (2016) Cluster Analysis of Maize Inbred Lines. Journal of Nepal Agricultural Research Council.2, 33-36.

Marker S., and Krupakar A. (2009) Genetic divergence in exotic maize germplasm (*Zeamays* L.). Journal of Agricultural and Biological Science.4 (4), 44-47.

Souza E., and Sorrells M.E. (1991) Relationships among 70 North American oat germplasm: I. Cluster analysis using quantitative characters. Crop Science. 31(3), 599-605.

Singh P. K. and Chaudhari L.B. (2001) Genetic divergence in maize (*Zea mays* L.). Journal of Research-Birsa Agricultural University. 13(2), 193-196.

Ali Y., Atta B.M., Akhter J., Monneveux P. and Lateef Z. (2008) Genetic variability, association and diversity studies in wheat (*Triticumaestivum* L.)germplasm. Pak. J. Bot. 40(5), 2087-2097.